



# WELDED DIAPHRAGM SEALS

Offering the Premier Pressure Gauge / Mini-Seal Combination

## ADVANTAGES

### PROVEN PERFORMANCE

**Gearless, Direct Drive Design sets the industry standard for vibration, pulsation and shock.**

Performance without gauge fill fluid means sanitary environment friendly.

### RELIABLE ACCURACY

**Accuracy is 50% less affected by temp fluctuations. Requires 85% less fill fluid vs. the competition.**

Compact, low-volume design significantly reduces the impact of temperature on gauge accuracy.

### ELIMINATE LEAK PATHS

**Sleek, all-welded design** customized to perform specifically on Perma-Cal® gauges and eliminate potential leak paths.

### PRICE ADVANTAGE

**Superior performance at a superior price.**

Perma-Cal® Gauge on Mini-Seal versus C-Tube Gauge on Mini or Standard Seal

The choice is clear.



ray  
HI-VISIBILITY GAUGES  
SERIES

### ACCURACY (Ref. @ 68°F, ±2°F)

±.5% F.S. at M.S. / ±1% F.S.

±.5% F.S. (Grade 2A)

### RANGE AVAILABILITY

Vacuum to 1,000 psi (or equivalent)

Single Scale, Dual Scale, Vacuum and Compound

psi, bar, kPa, kg/cm<sup>2</sup> (others available)

Gauges below 100 psi may see loss of accuracy at low pressures.

### DIAL

Stainless Steel, Powder Coated Finish

Standard: White with Black Markings

Ray Series: Neon Yellow, Black Markings, Red Pointer

Customization available. Contact the factory.

### WINDOW

Acrylic

Tempered Glass

### POINTER

Anodized Aluminum

Zero-adjustable

### DIAPHRAGM SEAL

**Material (Wetted Parts):** 316 SS or Hastelloy

**Connection Type:** ½ NPT or ¼ NPT, Male or Female

**Burst Pressure:** 10,000 psi

### FILL FLUID

**Standard Fill:** Silicone DC200 (or equivalent)

Operating Temp: -40°F to 400°F

**Inert Fill:** Halocarbon 6.3 (similar to Fluorolube but suitable for vacuum service)

Operating Temp: -40°F to 400°F

**High-Temp Fill:** Silicone DC704 (or equivalent)

Operating Temp: 0°F to 650°F

Max 200°F in vacuum service for all fills.

CONSULT THE FACTORY FOR OTHER OPTIONS.

## CASE CONFIGURATIONS

### ABS PLASTIC

#### COLORS

Black, Blue, Green, Red, White, Yellow (availability varies by size)

#### OPERATING TEMPERATURE\*

Process: -40°F to 650°F

Ambient: -40°F to 190°F



2.5", 4.5" No Flange



4.5" Rear Flange



3.5", 4.5" Turret

### METAL

### MILITARY GRADE

### HIGH TEMP

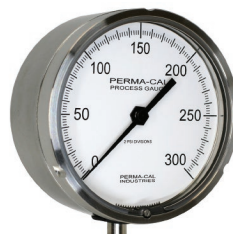
High performance cases providing extreme temperature, chemical and shock resistance.



2.5" No Flange  
Aluminum



4.5" No Flange  
SS Case, Alum. Ring



4.5" No Flange  
Stainless Steel



3.5", 4.5"  
Rear Flange  
Aluminum



4.5" Turret  
Glass-Filled Nylon

#### COLORS

SS and Aluminum: Powder Coated Finish (specify color)

Glass-Filled Nylon: Available in yellow only

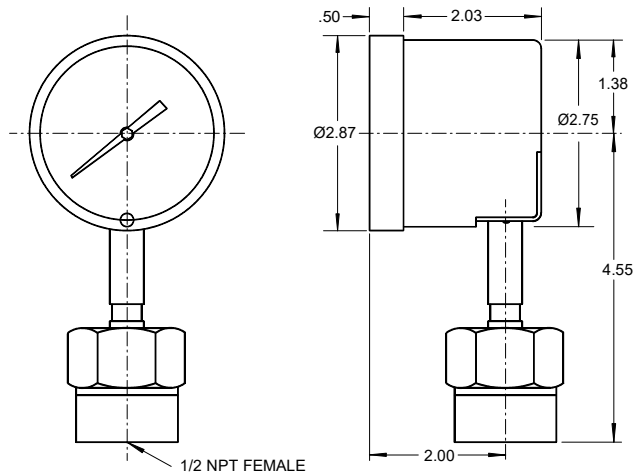
#### OPERATING TEMPERATURE\*

Process: -40°F to 650°F

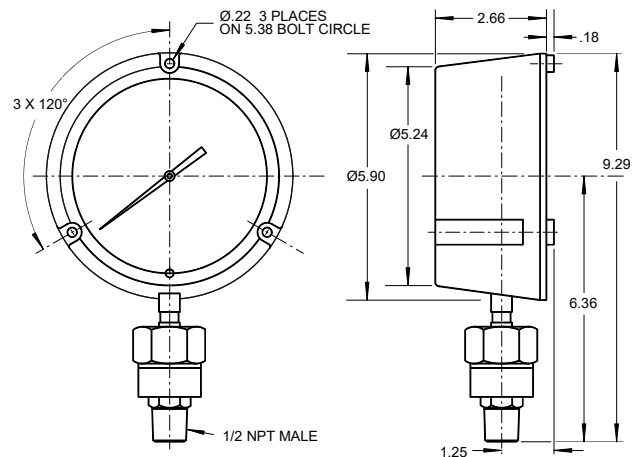
Ambient: -40°F to 400°F

\*Case, Diaphragm Seal, and Fill Fluid selection determines operating temperature range.

## DIMENSIONAL SPECS (common sizes)



2.5" No Flange with Female Mini-Seal



4.5" Turret with Male Mini-Seal